

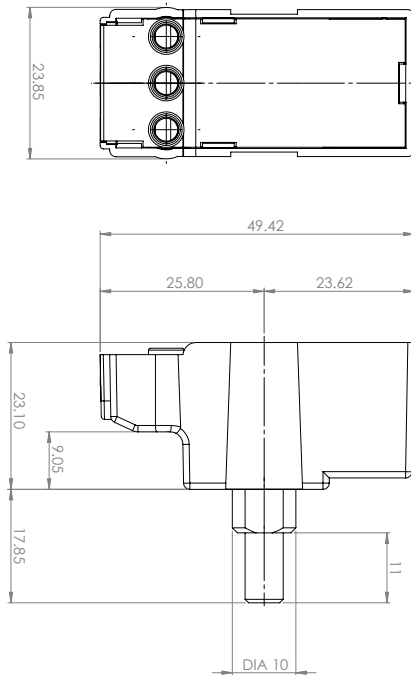
niglon

Wiring Accessories

LEDDIM150-G 2 Way Universal Dimmer



Technical Drawing



Technical Specifications

Supply Voltage	220-240 AC 50Hz
Compatible with	LED, Halogen, Incandescent, GLS
Programmable	3 Mode settings for improved compatibility
Compatible with	Niglon Dimmer Front Plates Niglon Grid Dimmer Mounting Kits
Min Backbox Depth	25mm (dependant on front plate used) 35mm (when used with Matrix20 Grid)
Extra	In-built overload protection
Warranty	3 Years

Maximum Loads

Lighting Type	Push on/off Dimmer
GLS	150W
Mains Halogen	150W
Low Voltage Halogen (Max. 10 transformers per gang)	5-150W
Dimmable LED	1-10 LED's (5-100W)
Incandescent lighting, MV Halogen lamps	5-150W
Unsuitable for	<ul style="list-style-type: none"> • Non-dimmable Fluorescent lamps and tubes • Wire-wound or toroidal transformers • CFL Lamps

Wiring Diagrams

